

**FLUKE®**

# FlukeView Forms

Documenting Software

Users Manual

September 2000, Rev. 3, 9/2003  
© 2002, 2003 Fluke Corporation. All rights reserved. Printed in USA  
All product names are trademarks of their respective companies.

# Table of Contents

Title	Page
Introduction .....	1
Contacting Fluke .....	1
FlukeView Documentation .....	2
FlukeView Features .....	2
Installation .....	2
System Requirements.....	3
Installing FlukeView Forms from the CD.....	3
Overview of FlukeView Forms .....	3
Starting FlukeView Forms.....	6
Selecting a Form Template.....	6
Getting Data from the Meter to the PC .....	6
How Your Meter Communicates Data.....	7
Connecting the Serial Cable to a PC .....	7
Changing the Communications Port .....	7
Logged Readings and Display Readings.....	8
Uploading Data .....	8
Interactive Logging.....	9

Event Logging.....	12
Setting Up Your Logging Session.....	13
Viewing the Status of a Logging Session .....	15
Single-Reading Copy to Form .....	15
Data from Multiple Meters on a Single Form .....	16
Using Forms.....	17
Manually Adding User Data.....	17
Formatting Data on an Existing Form.....	17
Printing a Form.....	18
Saving a Form .....	18
Placing Existing Meter Data in a New Form Template .....	18
Display Selected Readings.....	19
Finding and Opening Saved Forms.....	19
Opening a Saved Form .....	19
Using the Find Button to Find a Saved Form .....	20
Editing a Saved Form.....	20
Deleting Forms .....	20
Exporting Data From a Form to a CSV File.....	20
Virtual Meter.....	21
Views.....	21
Memory.....	21
Primary/Secondary Readings .....	21
Meter Display.....	21
Functions.....	21
Preview Uploaded Data .....	21
Export Data.....	22
Clearing Data from Meter Memory.....	22
Single-Reading Copy to Form .....	22

Managing the Database.....	23
Opening Databases .....	23
Creating a New Database.....	23
Backup Procedures.....	23
Copying a Form To Another Database .....	24
Optimizing the Database.....	24
Program Options.....	24
Changing Program Options .....	24
FlukeView Forms Meter Functions .....	24
Clearing Data from Meter Memory.....	25
Changing Meter Settings .....	25
Altering Form Templates .....	25
Altering an Existing Template .....	25
Creating a New Form Template.....	26
Form Items.....	27
Logged Readings Form Items.....	27
Display Readings Form Items .....	28
Meter ID and Date Form Items.....	28
User Data Form Items.....	28
Static Form Items .....	29
Troubleshooting.....	29
Setting the Comm Port.....	30
Testing the Cable Connection.....	30

**Fluke Corporation**

**FlukeView® Forms License Agreement**

BY USING THIS SOFTWARE PRODUCT IN ANY MANNER, YOU ARE AGREEING TO ACCEPT THE FOLLOWING TERMS AND CONDITIONS.

Fluke Corporation (Fluke) grants you a non-exclusive right to use FlukeView Forms Documenting Software (Product) on a single PC or workstation (node), or on multiple nodes, provided that a multi-use license is obtained from Fluke and the number of nodes does not exceed the number of nodes for which license fees are paid. This grant of license does not include the right to copy, modify, rent, lease, sell, transfer or distribute the Product or any portion thereof. You may not reverse engineer, decompile, or disassemble the Product.

Fluke warrants that the Product will perform in its intended environment substantially in accordance with the accompanying written materials for a period of 90 days from the date of license acceptance. Fluke does not warrant any downloading errors or that the Product will be error free or operate without interruption.

FLUKE DISCLAIMS ALL OTHER WARRANTIES, EITHER EXPRESS OR IMPLIED, BUT NOT LIMITED TO IMPLIED WARRANTIES OF MERCHANTABILITY AND FITNESS FOR A PARTICULAR PURPOSE, WITH RESPECT TO THE SOFTWARE AND THE ACCOMPANYING WRITTEN MATERIALS. In no event shall Fluke be liable for any damages whatsoever (including, without limitation, indirect, consequential, or incidental damages, damages for loss of business profits, business interruption, loss of business information, or other pecuniary loss) arising out of the use of or inability to use this Product, event if Fluke has been advised of the possibility of such damages.

# ***FlukeView Forms Documenting Software***

## ***Introduction***

*FlukeView Forms Documenting Software* lets you transfer data from a supported digital multimeter directly to forms on your computer. This automates your troubleshooting or recording process, reduces the possibility for manual error and allows you to collect, organize and display meter data in a format that meets your needs.

## ***Contacting Fluke***

To order accessories, receive assistance, or locate the nearest Fluke distributor or Service Center, call:

USA: 1-888-99-FLUKE (1-888-993-5853)  
Canada: 1-800-36 FLUKE (1-800-363-5853)  
Europe: +31 402-675-200  
Japan: +81-3-3434-0181  
Singapore: +65-738-5655  
Anywhere in the world: +1-425-446-5500

Address correspondence to:

Fluke Corporation	Fluke Europe B.V.
P.O. Box 9090	P.O. Box 1186
Everett WA 98206-9090	5602 BD Eindhoven
USA	The Netherlands

Visit us on the World Wide Web at: [www.fluke.com](http://www.fluke.com)

## **FlukeView Forms Documentation**

The following documentation is available for use with *FlukeView Forms*.

**Table 1. Documentation Sources**

<b>Documentation</b>	<b>Format / Where to Find</b>	<b>Use For</b>
Users Manual	Adobe Acrobat / Available on the <i>FlukeView Forms</i> CD, and installed with the software	Basic operation and overview
Meter Connection Pages		Step-by-step instructions for connecting each type of meter
Tutorials		Step-by-step instructions for common tasks
Online Help	Windows Help / <i>FlukeView Forms</i> <b>Help</b> menu	On-the-spot application help
Technical Notes	Adobe Acrobat / Available at <a href="http://www.fluke.com">www.fluke.com</a> and on the <i>FlukeView Forms</i> CD	Detailed technical information.

## **FlukeView Features**

Acquires and documents readings from supported digital meters through IR or standard serial communications.

- Displays acquired results in graphs and tables.
- Allows you to save and print results.
- Allows you to retrieve and view previously saved results.
- Allows real-time logging directly to a connected PC, with meters that support interactive logging.
- Allows you to transfer collected readings to other PC applications.
- Provides standard form templates to display results professionally.
- Includes *FlukeView Forms Designer* program for creating customized form templates.

## **Installation**

This section describes how to install *FlukeView Forms* and *FlukeView Forms Designer*. Also, follow these instructions to upgrade from an older version of the software.

## **System Requirements**

Operating System: Microsoft Windows 95, 98 or ME, Windows NT 4.0, Windows 2000, or Windows XP.

Minimum recommended hardware: Pentium class microprocessor, 32 MB RAM, and up to 70 MB hard disk space (100 MB to install).

### *Note*

*To install the software on Windows NT, Windows 2000, or Windows XP, you must log in with Administrator privileges.*

## **Installing FlukeView Forms from the CD**

1. Insert the CD into your CD-ROM drive.
2. A window appears that lists options on the CD.

If the window does not automatically appear:

- a. On the Windows taskbar, select **Start**, then **Run**.
  - b. Type `d:\viewer.exe` (where `d:` is your CD drive letter).
3. Select **Install Software**.
  4. Select **Install FlukeView Forms**.
  5. Follow the installation instructions that appear.

## **Overview of FlukeView Forms**

The *Users Manual* provides an overview of what you need to know to use *FlukeView Forms*. This includes:

- Starting *FlukeView Forms*
- Selecting a form template
- Transferring data from the meter to the PC
- Managing forms to meet your needs
- Saving and retrieving data
- Exporting data
- Managing your database
- Troubleshooting

Most users start *FlukeView Forms*, select a form template, connect the meter to the PC, transfer data, add user data, and then print and save the form. More advanced users might spend time customizing form templates, retrieving and exporting data, and managing the database.



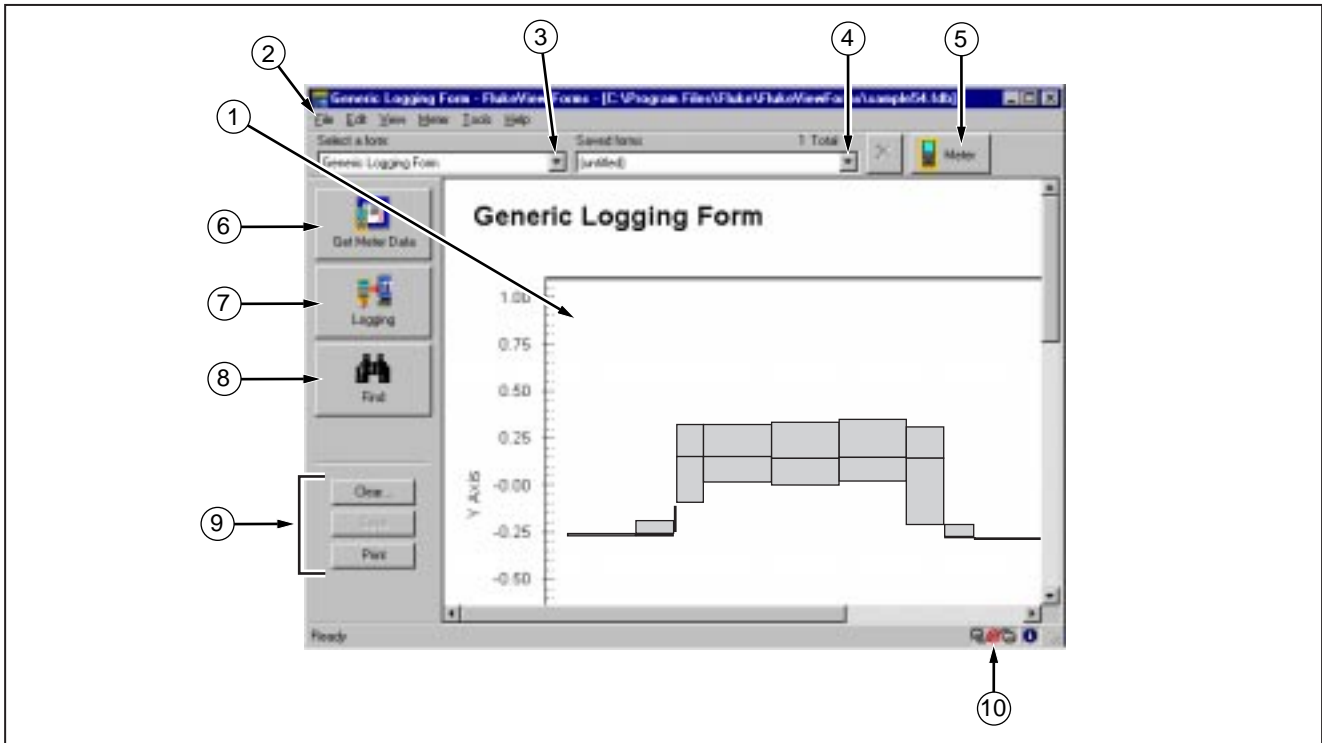


Figure 1. FlukeView Forms Screen

**Table 2. Graphic User Interface Components**

No.	Description
①	Active form template. Displays meter data and user-entered data.
②	<i>FlukeView Forms</i> menu.
③	<b>Select a form</b> drop-down list. Lists all form templates available in the open database. Identifies the active template currently being displayed.
④	<b>Saved forms</b> drop-down list. Lists all forms you have saved with the active template. Displays the name of the saved form you are viewing, or <b>(untitled)</b> if the form has not been saved.
⑤	Virtual <b>Meter</b> button. Opens the virtual meter window. The virtual meter displays the active meter readings and copies single-readings to the active form. It also lists, summarizes, and exports uploaded data.
⑥	<b>Get Meter Data</b> button. Uploads data from meter memory and displays it in the active form.
⑦	<b>Logging</b> button. Begins set up and interactive logging from the meter. Displays logged data on the active form.
⑧	<b>Find</b> button. Helps you locate forms you have saved previously.
⑨	<b>Clear, Save</b> or <b>Print</b> the active form.
⑩	Meter connection icon tells you if a meter is connected and communicating with your <i>FlukeView Forms</i> software.

## **Starting FlukeView Forms**

To start *FlukeView Forms*:

1. From the Windows taskbar, select **Start, Programs, Fluke**, then **FlukeView Forms**.
2. Click the **FlukeView Forms** menu item.

## **Selecting a Form Template**

*FlukeView Forms* templates are designed to display data in different ways. After you select the appropriate form template, it becomes the active form. When you transfer meter data, it displays in the active form.

1. On the **File** menu, select **New Blank Form**.
2. A **New Blank Form** dialog box appears. Double-click a form template name in the **Select a form template** list.

### *Note*

*If you open a new blank form template, FlukeView Forms asks if you want to save any changes you have made to the current active form.*

*FlukeView Forms* provides general-purpose form templates. See online tutorials for more information on customizing form templates.

## **Getting Data from the Meter to the PC**

The meter communicates with a PC through an IR (infrared) serial cable. *FlukeView Forms* transfers meter data to the PC three ways:

- Upload data from meter memory
- Interactive logging
- Single-reading copy to the active form

The type of meter you have determines which transfer methods can be used.

### How Your Meter Communicates Data

The following table shows how certain Fluke meters communicate data to the PC, as well as the type of data readings the meters support. See *Logged Readings and Display Readings* later in this manual for additional details about types of readings.

**Table 3. Meter Communication Styles**

Fluke Meter Model	Uploading	Interactive Logging	Single-Reading Copy to Form
87 IV / 187		L	D
89 IV / 189	L,D	L	D
53 / 54	L,D		
183 / 185	D	L	D
45		L	D
789		L	D
1653	D		
‘L’ – Logged Readings / ‘D’ – Display Readings			

### Connecting the Serial Cable to a PC

1. Attach the 9-pin serial connector of the IR serial cable or standard serial cable to the serial port on your PC.
2. Attach the other end of the serial cable to the meter. For more details or information on your specific meter, see *Meter Connection Pages* on your CD.

### Changing the Communications Port

The communications port that *FlukeView Forms* uses is displayed at the bottom right of the *FlukeView Forms* screen.

To change the communications port:

1. Open *FlukeView Forms*.
2. On the **Tools** menu, select **Options**. The **Options** dialog box appears.
3. Click the **Communications** tab.
4. In the **Port** list, click the communications port you want to use. The default communications port for *FlukeView Forms* is COM1.

### **Logged Readings and Display Readings**

*FlukeView Forms* deals with two types of meter data, *logged readings* and *display readings*. Refer to Table 3 to determine the type of readings generated by your meter(s).

Logged readings are taken during a logging session. There are two ways to generate logged readings:

- During interactive logging between a meter and a PC running *FlukeView Forms*.
- Some meters support logging directly to meter memory. In this case, logged readings are stored in meter memory and uploaded from meter memory to *FlukeView Forms* at a later time.

Display readings are taken one at a time, as opposed to being recorded during a logging session. Display readings are transferred to *FlukeView Forms* two ways:

- When you upload individually saved readings from meter memory.
- When you perform a single-reading copy to form.

#### *Note*

*Readings stored in meter memory are identified variously as saved readings, stored readings or memory readings in the meter manuals.*

Logged readings in a logging session always have the same units. For example, results are all V ac, all V dc, etc. However, display readings may be in different units. Display readings are not graphed in *FlukeView Forms*, but logged readings can be.

#### *Note*

*FlukeView Forms* treats readings from Fluke 53/54-II meters as both logged readings and display readings. This is because the 53/54-II can record readings to meter memory one at a time if a logging interval of 0 is used.

### **Uploading Data**

If your meter has memory, the meter can record data without a PC present and store it in meter memory. *FlukeView Forms* then uploads data from the meter memory to the PC. Data storage on the meter is limited by the meter memory.

Meters that support uploading data are listed on Table 3.

To upload data:

1. Start *FlukeView Forms*.
2. Select the form template you want to use by opening the **File** menu and selecting **New Blank Form**. Highlight the form template in the **New Blank Form** dialog box and click **OK**.
3. Connect the meter to the PC using the IR cable.
4. Turn the meter on.

*Note*

*If your meter has a PC/IR SEND button, you must use that button to initiate communication with the PC.*

5. On the **Meter** menu, select **Get Meter Data** to upload the meter data to the active form. The **Get Meter Data** dialog box appears. In some cases, this step is unnecessary. Instead, you are prompted with the **Get Meter Data** dialog box automatically.

You can also press the **Get Meter Data** button to access the dialog box.

6. Data readings are copied directly into the active form.

### ***Interactive Logging***

In interactive logging, readings are logged directly from the meter and stored on the PC. This allows *FlukeView Forms* to take advantage of the PC's larger memory. However, it requires the meter to be connected to the PC while the logging session takes place; and the meter must have sufficient battery power to run for the length of the logging session.

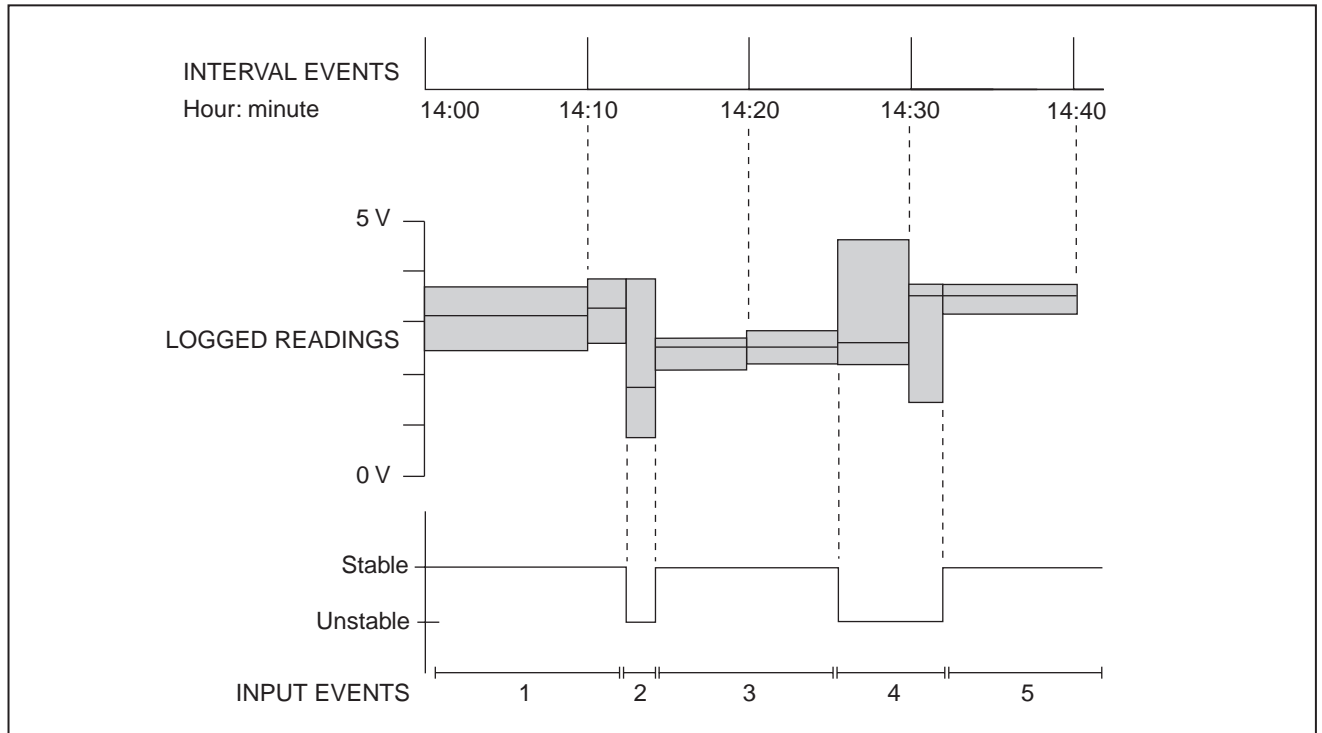
Meters that support interactive logging are listed on Table 3.

To begin interactive logging:

1. Connect the meter to the PC.
2. Select the form template you want to use by opening the **File** menu and selecting **New Blank Form**. Highlight the form template in the **New Blank Form** dialog box and click **OK**.
3. On the meter, choose the meter function and range you want to use to measure the input.
4. In *FlukeView Forms*, click the **Meter** button at the top right-hand portion of the toolbar. Use the virtual meter to confirm that the meter readings are correct.
5. From the **Meter** menu, select **Logging**. The **Logging Window** appears. You can also press the **Logging** button to access the **Logging Window**.
6. Set up your logging session using the **Setup** screen on the **Logging Window** (or make no changes to **Setup**, and use the default configuration).
7. Click **Start** or **Stop** to start or stop logging.

The **Setup** and **Status** radio buttons in the **Logging Window** display settings for and provide information about the logging session. Use them to:

- Change the default logging settings under **Setup**.
- Use **Example Log** to examine the effects of your logging settings on example data.
- Manually **Start** and **Stop** a logging session, or set **Auto Start/Stop** times for a logging session.
- Examine the **Status** of the active logging session.



**Figure 2. Interval Events and Input Events**

zk02f.eps



### Event Logging

During interactive logging, *FlukeView Forms* compresses the input being measured by the meter into a series of *events*. Each event is represented by a duration, starting time, ending time, and the highest, lowest and average values detected during the event.

For a more detailed discussion of all types of events, see the *FlukeView Technical Notes*, available on your CD.

Each event is stored in an individual logged reading.

#### Note

*If your meter supports the display of two readings at once, and both are being displayed, then both readings may be logged, depending on the settings you have selected.*

When you start logging, the meter readings are monitored by *FlukeView Forms* and are classified by event type. The two event types you will see most often are:

- *Input events* are logged when the input reading changes beyond the user-defined input event settings. You define, in settings, which readings are similar enough to constitute an input event.

Input events are described as either *stable* or *unstable*. Stable input events contain readings that fall inside the user-defined settings. Unstable input events contain readings that fall outside the user-defined settings. See Figure 2.

- *Interval events* are logged when the user-defined logging interval is up. Interval events can be thought of as a series of readings divided into sections by time. See Figure 2.

Input events are useful for detecting anomalies in a group of data, when monitoring a process or when troubleshooting a problem. Interval events are useful if the values you record are fairly stable in nature and your main purpose is documentation for record keeping.

If the values you record are fairly stable, but monitoring variance from the norm is critical, recording both interval events and input events can be a valuable troubleshooting tool. The interval events serve as routine documentation, while the input events record any significant changes that occur during the intervals.

By default, *FlukeView Forms* logs both input and interval events. You can view either or both on the form. If you decide to record only input events or only interval events, you lose this flexibility, but you reduce the number of readings you take and save disk space on your PC.

*Note*

*See the FlukeView Forms Technical Notes for a more comprehensive description of how event logging is performed and how to effectively use it for your purposes.*

### Setting Up Your Logging Session

From the **Meter** menu, open the **Logging Window**.

From the **Logging Window**, set up your logging session by selecting the **Setup** radio button. You can then customize the default logging setup to collect your data.

### Example Log

**Example Log** lets you view the effects of changing the logging settings. It shows how an example input is compressed into events with the current logging settings. After you change the logging settings and click **Apply**, the **Example Log** graph updates to reflect your changes.

Select **Change Example** if you want to change the example input data to approximate the inputs you are expecting to measure.

### Changing the Logging Interval

To change the logging interval, open the **Logging Window**, select the **Setup** view and make changes in the **Interval** section. Changing the logging interval:

- Does not usually significantly change a graph of the data. A very small interval (10 seconds or less) rarely provides more significant data, especially if input event data is also being recorded.
- Does directly impact the number of records stored (smaller interval means more records are recorded).
- Does **not** change the number of times that *FlukeView Forms* requests readings from the meter. This is an internal value based on the type of meter and the PC's CPU speed and current performance.

### Changing the Input Event Settings

Changing the input event settings allows you to specify what changes in the input are significant enough to begin a new input event.

To change event settings, open the **Logging Window**, select **Setup** view and make changes in the **Event** section.

With **Relative Threshold** selected, you specify a percentage change in the readings that begins a new event. Relative thresholds work well when signal noise (insignificant changes in the input signal) is proportional to the expected signal value.

With **Fixed Threshold** selected, you specify a fixed-value change in the readings (in the units of measure that the meter is using) that begins a new event. Fixed thresholds work well when you want to capture a significant unit change in the input you are measuring.

If the meter supports internal event logging, you can choose to have the meter perform the input event detection. When the meter is performing the input event detection, the input change detection is noticeably faster.

*Note*

*With the exception of the Fluke 789: If your meter supports the display of two readings at once, and both are being displayed, you need to select whether the input event thresholds are applied to the primary or secondary display.*

### **Viewing the Status of a Logging Session**

Once logging starts, from the **Logging Window**, select the **Status** view to watch the current logging session as it occurs. It shows number of events logged and current high, low and average values for the event in progress. The active form updates when an event closes.

### **Single-Reading Copy to Form**

You can capture a single display reading from your meter and copy it to a form for printing or saving. This is useful when you only need the reading that appears on the meter for your records.

To capture a single reading from your meter, the meter must be connected to the PC. You may copy more than one reading to the form, but the readings must be copied one at a time.

The most common way to perform a single-reading copy to form is to use the virtual meter window. Open the virtual meter by clicking the **Meter** button at the top right-hand portion of the toolbar.

Meters that support single-reading copy to form are listed in Table 3.

The drop-down list in the top left corner of the virtual meter window gives you several options for viewing data.

- The **Primary/Secondary Readings** option gives you a small screen that reflects the meter display.
- The **Meter Display** option simply gives you a larger-screen view of this data. Both views allow you to use single-reading copy to form.

To perform a single-reading copy to form:

1. Make sure the meter is connected to the PC. Check the meter-connection icon on the lower-right corner of the *FlukeView Forms* screen or the display on the virtual meter.
2. Open the virtual meter by clicking the **Meter** button at the top right-hand side of the toolbar.
3. Set the virtual meter view to either **Primary/Secondary Readings** or **Meter Display**.
4. When the virtual meter displays a reading you want to copy, click on **Copy Into Form**.

The reading appears at the bottom of any display reading table on the form, or in a testpoint reading form item.

### **Data from Multiple Meters on a Single Form**

You can display data from more than one meter on a single form. This allows you to compare data collected from separate meters or from the same meter at different times.

Use data groups to differentiate between data collected from different meters. When you transfer meter data to a form, specify the data group to associate with the data:

- When uploading data from meter memory, select the data group on the **Get Meter Data** dialog box under **Send data to group**.
- When interactively logging from the meter, select the data group on the **Logging Window** setup screen under **Log to Data Group**.
- For copying meter data from the virtual meter to the active form, you will be prompted for the data group to associate with the data.

Each form item that displays meter data is set to a particular data group, and displays the meter data corresponding to that data group. (Logged Readings Graphs can show data from multiple data groups on the same graph.)

To display multiple data groups on a form, the form template you are using **must** be enabled for multiple data groups. Otherwise, the form can only contain data from a single meter. Use *FlukeView Forms Designer* to enable data groups on a form template.

See the online Tutorial #4, “Multiple Data Groups,” for step-by-step instructions on how to use data groups.

## **Using Forms**

The form is the primary element of *FlukeView Forms* documenting software. Each online form contains form items, which display meter data or user-entered data.

Once you have transferred data from the meter to the active form, you can enhance the presentation of data in a number of ways.

### **Manually Adding User Data**

Most form templates have form items designed for information that is manually entered by the user. If you place your cursor in a field and the symbol **I** appears, that is a user data field. You can enter comments and additional data in these fields.

To retain user data when adding a new set of meter data:

1. Press the **Clear** button.
2. Choose **Meter data only** from the **Clear Form** dialog box.
3. Get the new meter data.

### **Formatting Data on an Existing Form**

You can change the way data appears on an existing form by altering the graphs and tables.

To alter graphs or tables, place your cursor inside the graph or table and right-click. A menu of options for that form item appears.

For instance, when looking at a graph, you can zoom in or out and print or save various views of the graph to suit your needs. This lets you highlight relevant data.

See the online Tutorial #2, “Formatting Meter Data,” for step-by-step instructions on how to alter the appearance of meter data on a form.

### Printing a Form

To print a form:

1. On the **File** menu, select **Print**. You can also use the **Print** button.
2. Sometimes, there is more meter data than the tables on the form can display. Select **Print tables at end of print job** to print all meter data in tabular form immediately after the form is printed.
3. Change printer, print range, or copy settings.
4. Click **OK**.

### Saving a Form

Saving a form stores all data and formatting on the active form so that you can view the form at a later time. If you do not save the form, all the data on the form is lost when you transfer new data from your meter, change the form template, or exit *FlukeView Forms*.

To save a form, from the menu, select **File**, then **Save**. You can also use the **Save** button. **Save** is disabled if there is no new data to save.

Saved forms are identified by the form template and the date and time they were first saved. You can also enter a 30-character remark to help identify the form. The remark is displayed after the date and time in the **Saved forms** list at the top of your screen. See “Finding and Opening Saved Forms” in this manual for more information.

### Placing Existing Meter Data in a New Form Template

If the active form contains meter data, you can display the same data in a different form template.

1. Select **Copy Form Data** from the **Edit** menu.
2. Open the **Select a form** drop-down list and select a different form template. If you haven't already saved the form, a **Save** dialog box gives you the option to save the data in your original form template.
3. A blank form is created from the form template you selected.
4. Select **Paste Form Data** from the **Edit** menu. The meter data is pasted to the form.

*Note*

*User data must be re-entered when you move existing data from one form template to another.*

### **Display Selected Readings**

Sometimes, you might not want to display or save all of the readings you have taken from the meter. The **Select Readings** dialog box allows you to:

- Delete unnecessary readings from the form.
- Rearrange the order of display readings on the form. If display readings are taken in the wrong order, they show up in the wrong order on the display readings table and testpoint readings form items. **Select Readings** allows you to correct their order.
- Combine multiple logged readings into a single reading.

*Note*

*You cannot edit the actual meter data. You can only delete entire readings, or you can change the order of readings.*

1. From the menu, select **Tools**, then **Select Readings** to display the **Select Readings** tool.
2. The **Select Readings** dialog box appears. Click **Help** for instructions on deleting, reordering, or combining readings.

See the online Tutorial #3, "Editing Data," for further instructions on using the **Select Readings** dialog box.

### **Finding and Opening Saved Forms**

If you save a form, you can access that form again at a later time.

#### **Opening a Saved Form**

To open a form that you have saved previously:

1. Open *FlukeView Forms*.
2. In the **Select a form** drop-down list, select the template in which you saved the form.
3. In the **Saved forms** drop-down list, browse to the form and click to open.



It is important that you select the template in which your data was originally saved. The **Saved forms** drop-down list only displays those forms that were saved in the selected form template. If you do not remember the template in which you saved the form, search for it using the menu. From the menu, select **File**, then **Open Saved Form**. You can also use the **Find** button to locate the saved form.

### Using the Find Button to Find a Saved Form

The **Find** button provides a more powerful way to locate saved forms. Use it to list forms that match criteria you establish.

1. Open *FlukeView Forms*.
2. Click on the **Find** button.
3. Fill in the criteria to search for forms. You can search by form name, save date, or data type.
4. Click the **Find Now** button.

### Editing a Saved Form

You can edit forms you have saved previously by opening the saved form and changing user data. You can then either perform a **Save** to overwrite the original form, or **Save As** to create a new form with the edited material.

### Deleting Forms

If you need to delete a previously-saved form:

#### Note

*This action permanently deletes a saved form and all the data it contains.*

1. Highlight the form in the **Saved forms** drop-down list.
2. From the menu, select **File**, then **Delete Saved Forms**.
3. Confirm your command to delete the saved form.

### Exporting Data From a Form to a CSV File

You can save meter data in a format that can be used by other software applications. *FlukeView Forms* exports the data to a comma-delimited file with a file name extension of .csv.

1. On the **File** menu, select **Export Data**. The **Export Data** dialog box appears.
2. Assign a file name and click **Save** to copy the data to the file.

## ***Virtual Meter***

The virtual meter is useful if you want to view meter data before adding it to a form. It allows you to preview uploaded data, to export and copy data, and to copy a single reading to a form.

To open the virtual meter, click the **Meter** button on the right-hand side of the toolbar.

### ***Views***

The virtual meter has three views for displaying data. The display method(s) that are available depend on the meter you are using.

### ***Memory***

This view shows the logged and display readings that were last uploaded from meter memory. It shows meter data in tabular form for you to view before placing it in the active form. It also allows you to export uploaded meter data to a .csv file, to manually copy the meter data to the form, and to clear the meter's memory.

### ***Primary/Secondary Readings***

Provides a compact, virtual representation of readings as they occur on your meter's display. If your meter displays both primary and secondary readings, the virtual meter shows both readings. You can perform a single-reading copy to form in this view.

### ***Meter Display***

Provides a large-view, virtual representation of readings as they occur on your meter's display. You can perform a single-reading copy to form in this view.

### ***Functions***

#### ***Preview Uploaded Data***

The virtual meter allows you to preview data in tabular form before you place it in a form.

#### Export Data

You can export uploaded meter data as a .csv file by doing the following:

1. Transfer data from meter memory to *FlukeView Forms*.
2. To open the virtual meter, click the **Meter** button on the right-hand side of your display.
3. Select the **Memory** view.
4. Click on the **Export** button.
5. Assign a file name and click **Save**.

#### Clearing Data from Meter Memory

You can use *FlukeView Forms* to clear data from the meter's memory.

To find out how to do this, see this topic under the section entitled "FlukeView Forms Meter Functions" in this manual.

#### Single-Reading Copy to Form

You can capture a single testpoint reading from your meter and copy it to a form for printing or saving.

To find out how to do this, see this topic under the section entitled "Getting Data from the Meter to the PC" in this manual.

## **Managing the Database**

*FlukeView Forms* stores all meter data, user data and forms in *FlukeView Forms* databases.

You can change the active database in *FlukeView Forms* and create new databases in *FlukeView Forms Designer*.

You should create new databases as your database grows larger. Storing all the data you collect into a single, large database can lead to poor performance. Instead, store your data in several smaller *FlukeView Forms* databases, with similar data stored together. You can also copy forms from one database to another.

### **Opening Databases**

To open a different database:

1. Open *FlukeView Forms*.
2. On the **File** menu, select **Open Database**.
3. Browse to the drive and folder containing the database.
4. Select the database you want to open and click **OK**.

By default, *FlukeView Forms* databases have the file name extension `.fdb`.

### **Creating a New Database**

To create a new database:

1. Open *FlukeView Forms Designer*.
2. On the menu, select **File**, then **New Database**.
3. Name the new database and save it.

By default, *FlukeView Forms* databases have the file name extension `.fdb`.

### **Backup Procedures**

To back up the database:

1. Open *FlukeView Forms Designer* to a blank form.
2. On the menu, select **File**, then **Open Database**.
3. Select the database to back up and click **OK**.
4. On the menu, select **Advanced**, then **Database Maintenance**.
5. Select **Backup** and follow the on-screen instructions.

### **Copying a Form To Another Database**

You can copy a saved form, including all of the meter data and user data stored with it, to another database.

1. Open *FlukeView Forms*, and view the saved form you wish to copy.
2. On the menu, select **File**, then **Export Form**.
3. Select the database you want to copy the form to; or type in a new database name to create a new database containing only this saved form.
4. Click **OK**.

### **Optimizing the Database**

To improve performance, optimize your *FlukeView Forms* database.

1. Open *FlukeView Forms Designer* to a blank form.
2. On the menu, select **File**, then **Open Database**.
3. Select the database to optimize and click **OK**.
4. On the menu, select **Advanced**, then **Database Maintenance**.
5. Select **Optimize** and follow on-screen instructions.

### **Program Options**

From the menu, select **Tools**, then **Options** to:

- Change default program options for the active form.
- Change communications options.

### **Changing Program Options**

You can change the default options for the active form, as well as change some of the communications options.

1. On the **Tools** menu, select **Options**. The **Options** dialog box appears.
2. Use the **Communication** tab or **Preferences** tab to change the appropriate options.

### **FlukeView Forms Meter Functions**

You can change some meter settings from *FlukeView Forms*.

### ***Clearing Data from Meter Memory***

Use *FlukeView Forms* to clear data from meter memory.

On meters that allow you to save several types of meter data to meter memory, *FlukeView Forms* prompts you to select which type to clear.

To clear data from meter memory:

1. On the **Meter** menu, select **Clear Meter Memory**. The **Clear Meter Memory** dialog box appears.
2. Click **OK** to confirm.

### ***Changing Meter Settings***

You can use *FlukeView Forms* to change some meter settings, including synchronizing the clock, internal logging settings and other meter functions that are specific to the type of meter.

1. Turn on the meter.
2. From the **Meter** menu, select **Change Meter Setup**.
3. Make changes to the dialog box.
4. Click **Send** to change the meter settings.

### ***Altering Form Templates***

You can alter the form templates provided by *FlukeView Forms* or you can create new templates using *FlukeView Forms Designer*.

#### ***Altering an Existing Template***

1. Open *FlukeView Forms Designer*.
2. Open an existing form template.

3. Enable or Disable data groups by selecting **Layout**, then **Data Groups**. Click **Help** for detailed instructions.
4. Click on any form item, then click and drag its border to move it to a new location.
5. Add new form items from the menu by selecting **Edit**, then **Insert Form Item**. Highlight the form item name and click **Insert**.
6. Delete an existing form item by selecting it (click on the form item in the form template). From the menu, select **Edit**, then **Delete Form Item**.
7. Change fonts, type colors and other form-item characteristics by selecting the form item (click on the form item in the template). From the menu select **Edit**, then **Properties**. Make changes.
8. Save the form template in one of the two following ways:
  - with a new template name by opening the **File** menu, and selecting **Save As**; or
  - overwrite the active template by opening the **File** menu and selecting **Save**.

### **Creating a New Form Template**

1. Open *FlukeView Forms Designer*. The screen should be blank. If not, on the menu, select **File**, then **New**.
2. Enable or Disable data groups by selecting **Layout**, then **Data Groups**. Click **Help** for detailed instructions.
3. Add new form items from the menu by selecting **Edit**, then **Insert Form Item**. Highlight the form item name and click **Insert**.
4. Move the form item to its proper location on the form.
5. Change fonts, type colors and other form-item characteristics by selecting the form item (click on the form item in the template). From the menu select **Edit**, then **Properties**. Make changes.
6. Once the form template is complete, save it with a new template name from the menu by selecting **File**, then **Save As**.

## **Form Items**

Each form template contains form items, which display meter data or user data. The following is a list of available form items. These are found in templates and can be incorporated into designed forms.

Some form items can only be used by certain meters. Get a list of form items for your meter by selecting the **Edit** menu, then **Insert Form Items**. In the drop-down list for **Display Form Items for Meter**, select your meter. *FlukeView Forms* displays only the form items that your meter can use.

## **Logged Readings Form Items**

### **Logged Readings Graph**

Provides a graphic representation of the logged readings recorded during a logging session. Data from multiple logging sessions can be viewed on the same graph, with a variety of formatting options.

The horizontal axis shows the time and the vertical axis shows a scale for the logged reading values.

### **Logged Readings Table**

Displays logged readings in table format. Initially, this table lists the logged reading values that are grouped in the logged readings graph. Can display input event data, interval event data, or both.

### **Logging Summary**

Displays the following information about a logging session on the form:

- Logging session information: start, stop, and elapsed time; interval length; number of readings; scaling factor; and other meter-specific data.
- Summary information: the maximum, average, and minimum logged readings.

### **Event Amplitude Histogram**

Graphically shows the distribution of logged readings by their amplitudes (values). This is often useful when the logged readings fall into several discrete levels.

### **Event Duration Histogram**

Graphically shows the distribution of logged readings by their duration (length).

### **Event Scatter Graph**

Graphs the duration of logged readings against their amplitude. Typical readings tend to plot together in a cluster, whereas exceptional events are plotted away from the typical ones. This can be useful when there is a recurring event.



#### Note

*Some of the information displayed depends on the type of meter you are using.*

### Display Readings Form Items

#### Display Readings Table

Presents display readings in table format. The display readings table maintains the original unit of measure. The table can be extensively customized, and columns may be added for entering comments about individual readings.

#### Testpoint Reading

Displays a single display reading on the form. The display reading may be scaled. The row number of each display reading in the display reading table corresponds to the reading number associated with each testpoint reading form item.

#### Note

*Testpoint Reading does not support Fluke 1653 readings.*

### Meter ID and Date Form Items

#### Date Time Stamp

The time stamp is automatically updated to your specifications the first time a form is saved, when meter data is received, or when the form is modified.

#### Meter Identification

Displays the serial and/or model number of the meter that was used to transfer the meter data.

### User Data Form Items

#### Memo

Provides a space (up to a maximum of 64,000 characters and 1000 lines) for adding user comments and notes. You can use the text in the memo when searching for forms with the **Find** button.

#### Check Box

Use the check box form item to record a yes or no response. Selecting the check box form item signifies **Yes**. Clearing the check box signifies **No**.

### **Numeric Entry**

Provides a space to type numeric values on the form.

### **Selection Box**

Allows you to choose data from a list of predefined values that are set up when you design the form template. You can also add values to the selection box when you enter data. You can use the text in the selection box when searching for forms with the **Find** button.

### *Static Form Items*

Static form items are those items that can only be modified in FlukeView Forms Designer.

### **Counter**

The counter form item displays a unique incrementing number on saved forms. Each time you save a form that contains a counter form item, the counter form item is incremented from the last time that form was saved.

If a form contains a counter form item, saving it causes it to increment or decrement as specified by you when you create the form template.

### **Bitmap**

A static graphic image, such as a company logo. Bitmap image formats include:

- Graphics Interchange Format (.gif) files
- JPEG File Interchange Format (.jpg) files
- Windows Bitmap (.bmp) files

### **Label**

This item displays static text on the form.

### *Troubleshooting*

For other troubleshooting issues and up-to-date information, see the FAQ and technical notes at [www.fluke.com](http://www.fluke.com).

### **Setting the Comm Port**

To change the communications port:

1. On the **Tools** menu, select **Options**. The **Options** dialog box appears.
2. Click the **Communications** tab.
3. In the **Port** drop-down list, select the communications port you would like to use.
4. Click **OK**.

#### *Note*

*The current communications (COM) port is displayed at the bottom right of the FlukeView Forms screen. Double-clicking on this will bring up the **Options** dialog.*

### **Testing the Cable Connection**

To test the meter connection:

1. On the **Tools** menu, select **Options**. The **Options** dialog box appears.
2. Click the **Communications** tab.
3. Press the **Test** button on the right-hand side to test the cable connection.

